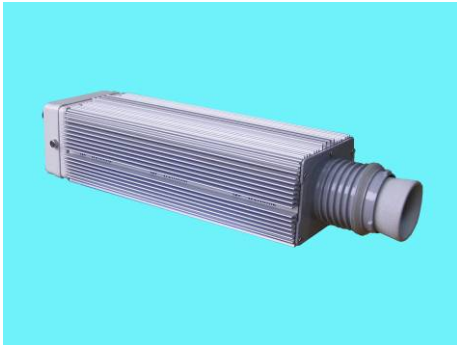


WEX120-1000B Fixture for Greenhouse

110~240V 1000W Digital Ballast run for HPS and MH lamps

Used in these fields:

Greenhouse Lighting
Hydroponics Lighting



Features

- Run for HPS and MH lamps
- High power factor: $PF \geq 0.98$
- Low harmonic: General harmonic $THD \leq 10\%$
- High light efficiency
- Low power consumption
- Constant output of power: Constant output of power and light when voltage varies between $-15\% \sim +15\%$ of rating voltage
- Protection functions: Open circuit and short circuit protection functions available.
- Easy installation: Easy to hang the lamp, no need any external starter and compensation capacitor.
- Completely silent: no more humming and buzzing
- Working temperature: $-10^{\circ}\text{C} \sim +40^{\circ}\text{C}$
- Approval: UL, CUL, EMC, ROHS

Suitable Bulbs

1000W HPS/MH bulb of America standard

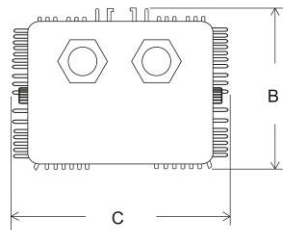
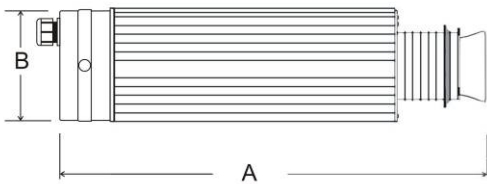
Electrical Performance

Data is based on operating a standard 1000W MH/HPS lamp. Supply power is based on a typically commercial 120V/60Hz.

Model	Rating Voltage (V)	Input Power (W)	Input Current (A)	Power Factor	THD	Safety Voltage (V)	Lamp Power (W)
WEX120-1000B Fixture For Greenhouse	120	1060	8.84	≥ 0.98	$\leq 10\%$	110~240	1000

Dimension

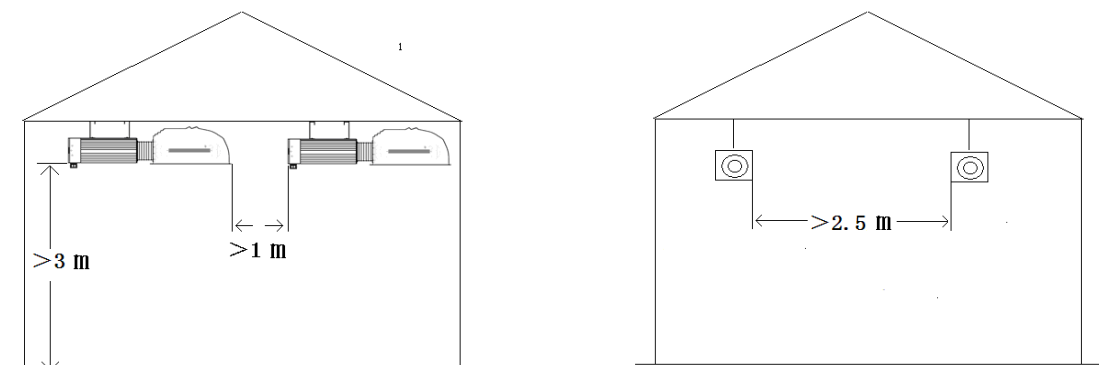
A:495mm B: 97mm C: 135mm

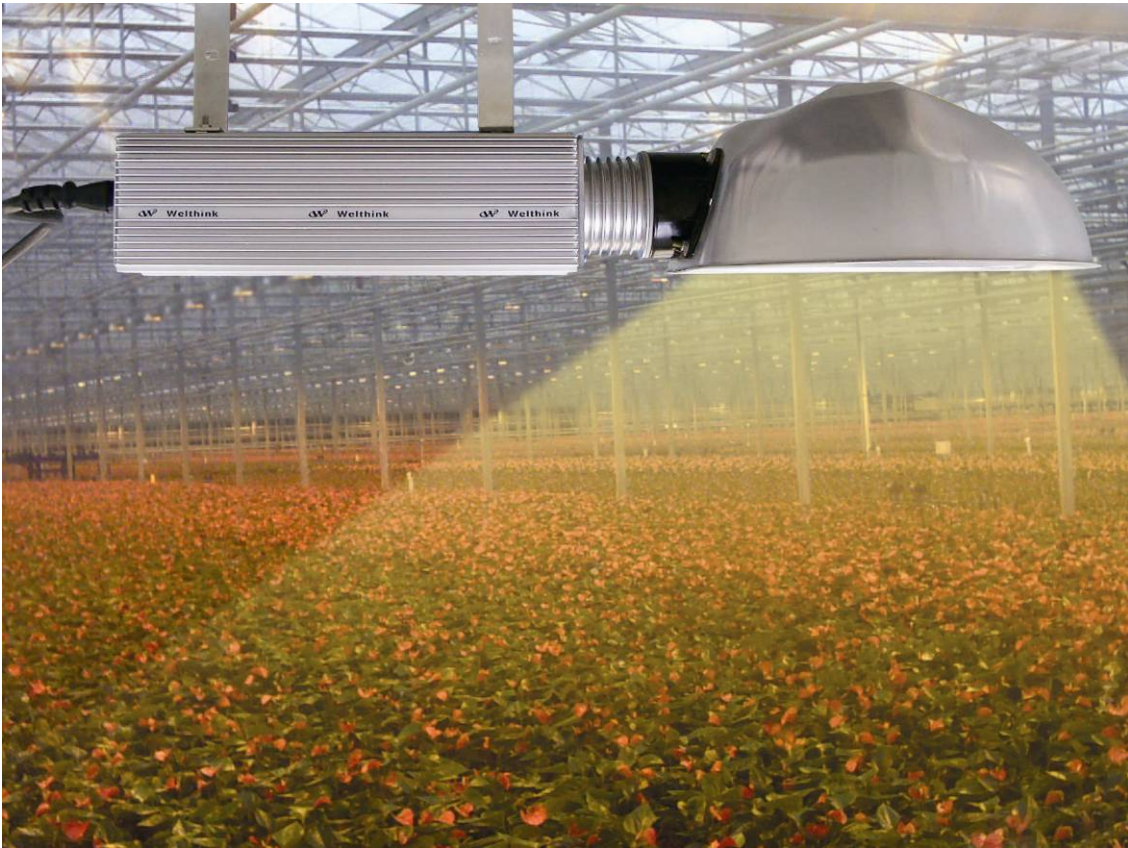


Caution Instructions

- **Only professional persons allowed to do below operation**
- Before assembly & maintenance, please make sure the power is cut off.
- Before connecting the cord, check the voltage is ok, check the cross section of cord is sufficient. Connect earthing cable before connecting other cables.
- This product must be equipped with right HPS and MH lamps as to get higher efficiency, safety and more luminance output.
- The product is for indoor use only.
- Suitable environmental temperature is about $-10\sim+40^{\circ}\text{C}$
- In order to avoid shaking, Digital Ballast should be fixed well. Any falling can cause damage or body hurt

Install connecting method (Height,Distance for reference only)





Welthink Lighting

Welthink reserves the right of final interpretation about this document.

Welthink Lighting